



# EAGLES THEATRE

## TECHNICAL INFORMATION



106 W. Market St. | Wabash, Indiana | [www.eaglestheatre.com](http://www.eaglestheatre.com)

## **Contact Information:**

Mail & street address: 106 West Market Street, Wabash IN 46992  
Phone number: 260.563.3272  
Fax: 260.563.0873  
Web: [www.eaglestheatre.com](http://www.eaglestheatre.com)

Tod Minnich  
President/CEO  
Business: 260.274.1401  
[tminnich@honeywellfoundation.org](mailto:tminnich@honeywellfoundation.org)

Cody Lee  
Guest Relations Team Leader  
Business: 260.274.1424  
[clee@honeywellfoundation.org](mailto:clee@honeywellfoundation.org)

Alex Evolga  
Director of Entertainment  
Production Business: 260.274.1415  
[aevolga@honeywellfoundation.org](mailto:aevolga@honeywellfoundation.org)

Afla Irani  
Vice President of Hospitality  
Business: 260.274.1419  
[airani@honeywellfoundation.org](mailto:airani@honeywellfoundation.org)

Emergency number: 911

Non-emergency numbers:

Fire Department:	260.563.1166	1000 N. Wabash St., Wabash, IN
Police Department:	260.563.1111	1190 Manchester Ave., Wabash, IN
Wabash County Hospital	260.563.3131	10 John Kissinger Dr., Wabash, IN

### **Health / medical:**

Hospital:  
Parkview Wabash Hospital  
10 John Kissinger Dr.  
260.563.3131

Clinic:  
Parkview Physicians Group  
FirstCare Walk In  
1655 N. Cass St.  
260.274.0387

Dentist:  
Corey Martinez, DDS  
Brush Dental  
278 Manchester Ave.  
260.563-4065

OB/GYN  
Heartland OB/GYN  
807 N. Cass St.  
260.563.3300

Optometrist:  
Midwest Eye Consultants  
1143 N. Cass St.  
260.563.3672

Chiropractor:  
Wabash Chiropractic Center  
508 N. Wabash St.  
260.563.8746

Sports & Physical Therapy  
Keith Lancaster  
1310 Manchester Ave.  
260.563.5630

Pharmacy:  
CVS  
486 N. Cass St.  
260.563.6941

Walgreens  
487 N. Cass St.  
260.563.3138

Health Club:  
YMCA  
500 S. Cass St.  
260.563.9622  
[wabashcountyyymca.org](http://wabashcountyyymca.org)  
**1 block away\***

### **General:**

Kroger 1309 N. Cass St.	Walmart 1601 N. Cass St.	US Post Office 111 W. Main St.	FedEx & UPS Authorized Outlet Sunshine Pack & Ship 1351 N. Cass St.
----------------------------	-----------------------------	-----------------------------------	---

**Restaurants:****Eugenia's\*\*****In building**

260.563.1102

11-2 M-F, Su

[Website](#)**Twenty\***

111 W. Market St.

260.563.0111

Open until 9 or 10

[Website](#)**Market Street Grill\***

90 W. Market St.

260.563.7779

Open until 10:30 pm

[Website](#)**Modoc's\***

205 S. Miami St.

260.569.1281

Open until 9 pm

[Website](#)**Goodfella's Pizza**

1118 Stitt Street

260.569.1162

Open until 9 or 10

[Website](#)**Pizza King\*\***

46 W. Canal St.

260.563.7417

Open until 10 pm

[Website](#)**Una Bella Pizza**

1710 S. Wabash St.

260.563.7333

Open until 9 pm

[Yelp w/ menu](#)**Harvey Hinklemeyers**

1605 N. Cass St.

260.274.2811

Open until 10 pm

Pizza and sandwiches

[Website](#)**Habanero Grill**

700 S. Cass St.

260.563.7722

Open until 9 pm

Mexican

[Website](#)**New Asian Buffet**

1367 N. Cass St.

260.274.1349

Open until 9:30 pm

Chinese

[Website](#)

\*Restaurants within walking distance of Eagles

**\*\* Advance arrangements can be made for in-house catering. Eugenia's is the exclusive caterer for Eagles and no outside catering is allowed in the building.**

North Cass Street (State Road 15) also has the usual assortment of fast food & delivery establishments including Arby's, Burger King, Culver's, Hardee's, KFC, Long John Silvers, McDonalds, Papa Johns, Pizza Hut, Subway, Taco Bell, Dairy Queen, and Wendy's.

**Ground Transportation:**

Taxi service is not currently available in the Wabash area; however advance arrangements may be made for ground transportation.

**Hotels:**

Charley Creek Inn

260.563.0111

111 W. Market St.

Directly across from Eagles

[www.charleycreekinn.com](http://www.charleycreekinn.com)

Holiday Inn Express

260.569.1189

1131 N. Cass St.

2 miles from Eagles

[Website](#)

Knight's Inn

800.626.7103

1950 S. St. Rd. 15

3 miles from Eagles

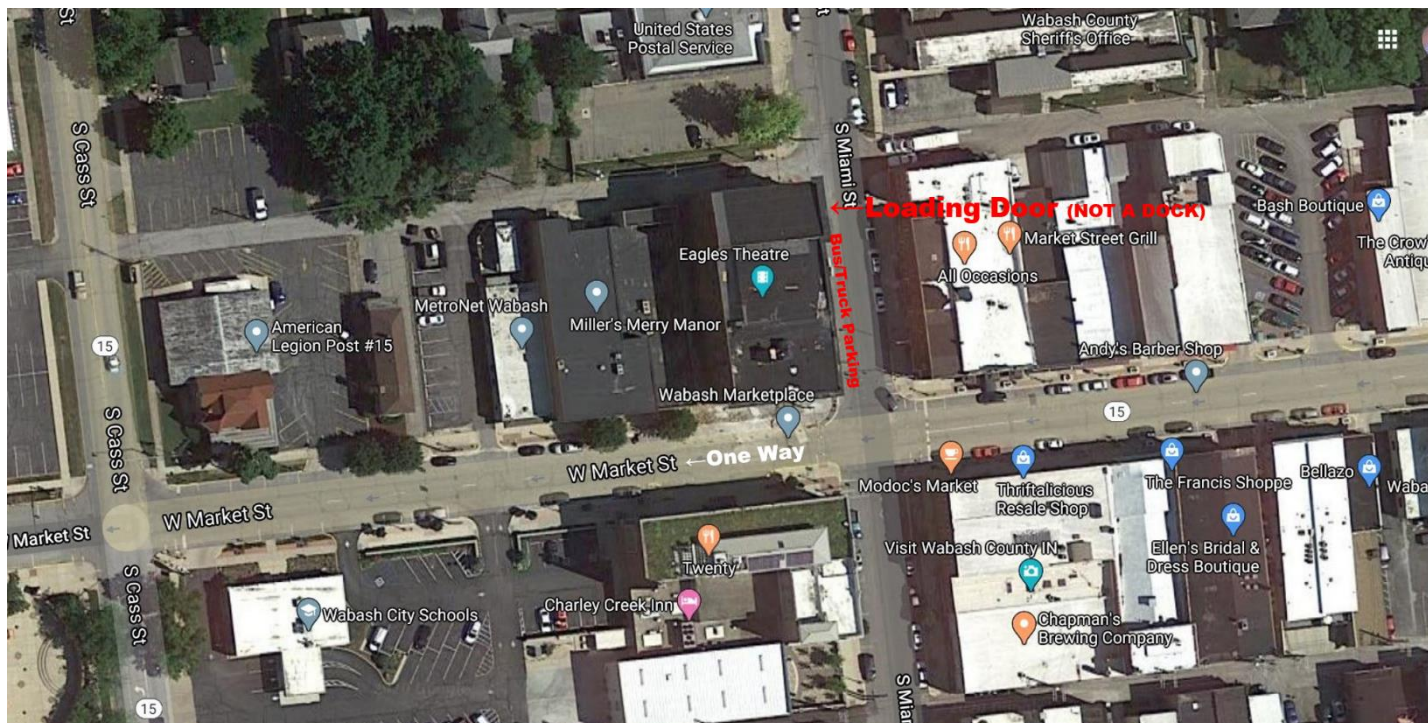
[Website](#)**Visiting Wabash:**

Wabash Marketplace

[Website](#)

Wabash County Tourism

[Website](#)



### ***Load In Area:***

Loading door is located on the northeast corner of the Eagles Theatre, directly off of Miami Street. This is not a dock, it is a ground level roll door with an approximate 36" drop down to stage, ramp provided from street level to stage. Bus and truck parking is located on the east side of the building running parallel to Miami Street. If traveling with a large bus or truck we will traffic cone off the side of the area the day before for your arrival.

### ***Stage Dimensions:***

**Full Stage – 60' X 35'**

**Proscenium – 33'6" X 29'2" @ Center**

**Show Deck – 29' X 27'6"**

**Plaster Line to Upstage Black – 22'5"**

**Wings – (SL) 9' X 14' / (SR) 3' X 24'**

**Storage Upstage of Blackout Curtain – 36'6" X 5'**

**Grid Height – 52'4"**

### ***Dressing Room Information:***

All three dressing rooms are located under the stage. Accessible from stage left via stairs and elevator and stage right via stairs only. Each dressing room has dedicated program audio feed and volume control.

**Cast Dressing Room:** 12'6" X 24' / Can comfortably hold 8-10 people

**Flex Dressing Room/Green Room:** 13'6" X 11' / Can comfortably hold 2-4 people

**Star Dressing Room:** 17'9" X 11' / Can comfortably hold 2-3 people, includes full bathroom

### ***Audio Package Information:***

**FOH Console:** Yamaha QL5

**Routing:** Yamaha Rio3224 on SL ran via CAT6 to FOH console

16 channel bidirectional copper snake SL to FOH

**Main System:** JBL VTX A8 Main Array (9/Side), JBL VTX B18 Subs (3/Side), JBL Vertec 4886 Front Fills (4) ran on Crown iTech HD 4/3500 Amplifiers

**Monitor System:** JBL VRX915M (8 wedges on up to 8 channels) ran on Crown XTi 6002 Amplifiers

**In-House Audio Peripherals:** (1) 75' 12 Ch Whirlwind Drop Snakes  
(2) 50' 12 Ch Whirlwind Drop Snake  
(1) 50' 12 Ch Whirlwind Drum Drop Snake  
(1) 25' 8 Ch Fan-to-Fan Snake  
(12) Tripod Boom Stands  
(12) Round Base Straight Stands (telescoping booms available for these)  
1075' of 3-Pin XLR cable (10' / 25' / 50')  
830' of NL4 Speakon (10' / 25' / 50' / 75')  
(6) 15' Instrument Cable  
(4) 25' Instrument Cable  
(3) Countryman DT85  
(4) Radial ProD2  
(2) Whirlwind pcDI

**Microphone Package:** (4) Shure SM57  
(4) Shure SM58  
(2) Shure Beta57A  
(2) Shure Beta58A  
(2) Shure Beta52A  
(2) Shure Beta91A  
(4) Shure SM81  
(2) Sennheiser e602II  
(4) Sennheiser e904



- (2) Sennheiser e906
- (4) Shure ULXD Beta87A Wireless
- (4) Shure ULXD1 Bodypack Transmitter

### ***Lighting Package Information***

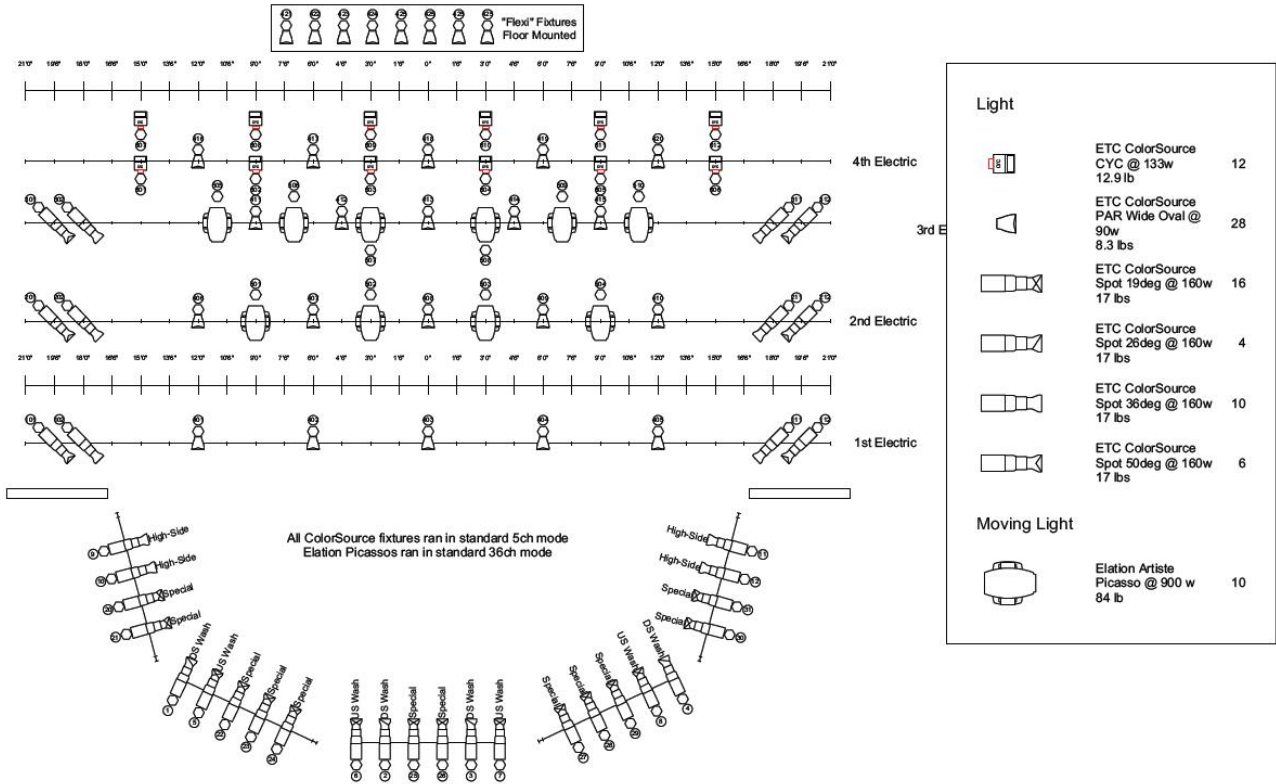
**FOH Console:** ETC Ion XE20

**Routing:** Main system input via sCAN  
Two system inputs located at FOH, two located in the second balcony spot booth, one located on stage right.

**Positions:** Front light position is the 3<sup>rd</sup> floor balcony rail, 45' from plaster line.  
1<sup>st</sup> Electric / 40' 2" Schedule 40 / 9 Non-Dim Circuits / 3 DMX outputs  
2<sup>nd</sup> Electric / 40' 2" Schedule 40 / 9 Non-Dim Circuits / 3 DMX outputs  
3<sup>rd</sup> Electric / 40' 2" Schedule 40 / 9 Non-Dim Circuits / 3 DMX outputs  
4<sup>th</sup> Electric / 40' 2" Schedule 40 / 9 Non-Dim Circuits / 3 DMX outputs  
Stage / 4 distribution boxes located on the perimeter wall / 4 circuits total

**Fixture Inventory:** (28) ETC Colorsourc Par  
(16) ETC 19° Colorsourc Spot  
(4) ETC 26° Colorsourc Spot  
(10) ETC 36° Colorsourc Spot  
(6) ETC 50° Colorsourc Spot  
(12) ETC Colorsourc Cyc  
(10) Elation Artiste Picasso  
(2) Altman Siren AFS-700 LED Follow Spot

**Eagles Theatre**  
**Preliminary Lighting Rep Plot 2020**



## Communication System

**Clear-Com:** 2 channel wired and wireless system in house. Two wired ports located in the spot booth, two wired ports located at FOH, one wired port located on stage right.

- (8) MS-701 Single Channel belt packs available with headsets  
(4) BP-300 Wireless belt packs available with headsets